



Rugby School

✱ KUKRI



ORANDO

LABORANDO

INTRODUCTION

Both Rugby School and Kukri Sports strive for quality, diversity, professionalism and teamwork, and share equal passion for the game created at Rugby School in 1823 when pupil William Webb-Ellis first caught the ball and ran with it on the now world-famous Close.

Facilitating access to a multitude of sports, particularly encouraging female participation, means Rugby School is strongly aligned with our vision to inspire each individual's sporting journey. Teamwear creates a legacy of our time in sport; we now have a fantastic opportunity to showcase our shared values around continuing to develop physical activity at the School.

Our product is designed to meet the needs of young athletes, with the range as comfortable and practical off the field as it is high-performance on it. Rugby School continues to develop one of the leading sports programmes in the country.

Boys' Core Kit [Page 2](#)

Boys' Summer Sports [Page 6](#)

Accessories [Page 7](#)

Girls' Core Kit [Page 13](#)

Girls' Summer Sports [Page 17](#)

How to Order [Page 21](#)

Returns Policy [Page 22](#)



Rugby School

 **KUKRI**

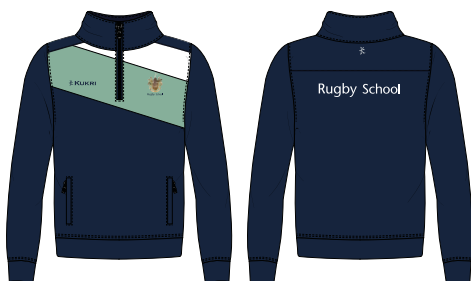


TRAINING T-SHIRT
RG00073M214

S-Spire 100% Polyester
Available in youth sizing

TRAINING POLO
RG00074M214

S-Spire 100% Polyester
Available in youth sizing

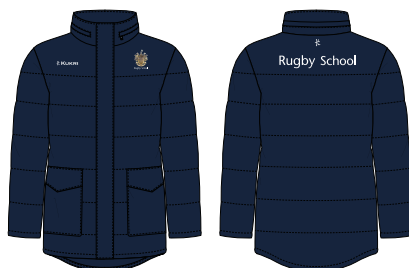


TRAINING 1/4 ZIP TRACK TOP
RG00077M224

S-Spire 100% Polyester
Available in youth sizing

**Replacing the full zip track top*

UNISEX PADDED JACKET



**HOCKEY MATCH SHIRT**

RG00027M224

S-Spire 100% Polyester
Available in youth sizing

RUGBY MATCH SHIRT

RG00035M224

Kohilo 100% Polyester
Available in youth sizing

**MATCH REVERSIBLE
RUGBY SHIRT**

RG00036M214

Duolite 100% Polyester
Available in youth sizing



TRAINING SHORTS

Available in youth sizing

CORE RUGBY SHORTS

Available in youth sizing



UNISEX TRACKSUIT BOTTOMS

Available in 32' inside leg length and 34' long length

Youth inside leg measurements:

YS – 27"

YM – 29"

YL – 30"



UNISEX L/S BASELAYER

Available in youth sizing

TRAINER SOCKS (TRS)

Nylon Mix

Available in youth sizing



MATCH SOCKS

RG00032U224





ATHLETICS VEST

RG00016M224

S-Spire 100% Polyester
Available in youth sizing

ATHLETICS GYM SHORTS

RG00018M214

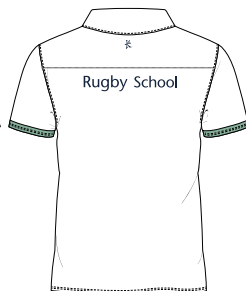
S-Spire 100% Polyester
Available in youth sizing

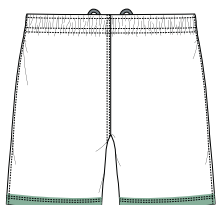


TENNIS POLO

RG00020M225

S-Spire 100% Polyester
Available in youth sizing



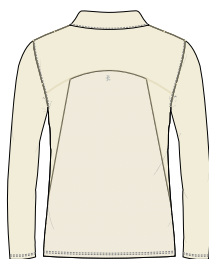


TENNIS SHORTS

RG00018M223

S-Spire 100% Polyester

Available in youth sizing

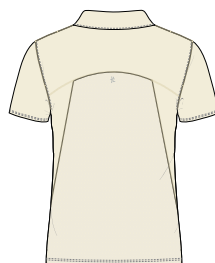


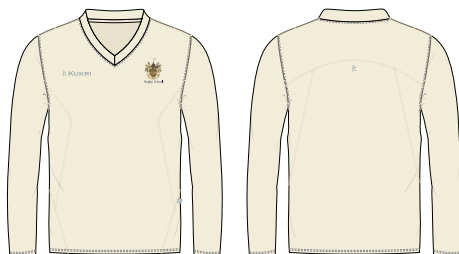
**LONG SLEEVED
CRICKET JERSEY**

KK00089M011

**SHORT SLEEVED
CRICKET JERSEY**

KK00088M011





**LONG SLEEVED
CRICKET FLEECE**
KK00091M011



CRICKET TROUSERS
KK00092M011

SLEEVELESS CRICKET FLEECE
KK00090M011







SCHOOL KIT BAG (LAPTOP BAG)
RG00086U214



SLIDERS
(OPTIONAL)



UNISEX PADDED GILET
(OPTIONAL)



SCHOOL SPORTS CAP
RG00103U039

220g Poly Twill 100% Polyester

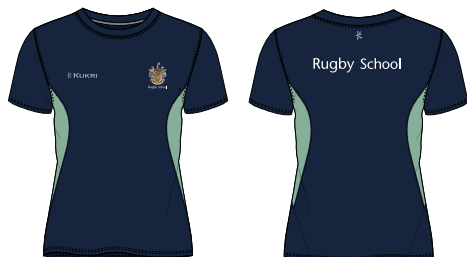


BOOTBAG
RG00087U214



DUFFLE BAG (OPTIONAL)
RG00088U214

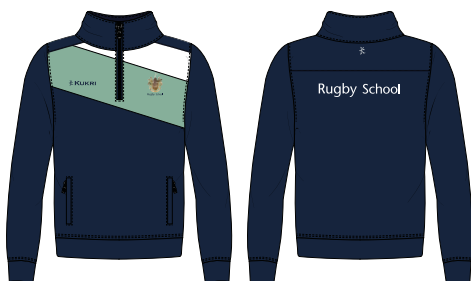


**TRAINING T-SHIRT**
RG00075W214

S-Spire 100% Polyester
Available in youth sizing

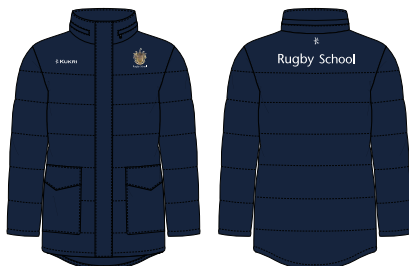
TRAINING POLO
RG00076W214

S-Spire 100% Polyester
Available in youth sizing

**TRAINING 1/4 ZIP TRACK TOP**
RG00077M224

S-Spire 100% Polyester
Available in youth sizing

**Replacing the full zip track top*

UNISEX PADDED JACKET

**HOCKEY MATCH SHIRT**

RG00029W224

S-Spire 100% Polyester

NETBALL DRESS

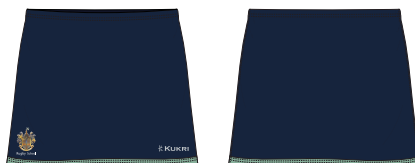
RG00036M214

S-Spire 100% Polyester
Available in youth sizing**NETBALL UNDERSHORTS**

RG00031W214

220g 88% Polyester 12% Elastane
Available in youth sizing**HOCKEY MATCH SKORT**

RG00031W214

Kohilo 100% Polyester
Available in youth sizing



WOMEN’S TRAINING SHORTS



WOMEN’S TRAINING
LEGGINGS



UNISEX TRACKSUIT
BOTTOMS



MATCH SOCKS
RG00032U224



TRAINER SOCKS (TRS)

Nylon Mix
Available in youth sizing





ATHLETICS VEST

RG00017W224

S-Spire 100% Polyester

Available in youth sizing

ATHLETICS SPRINT SHORTS

RG00048W039

Draglyne 90% Polyester

10% Elastane

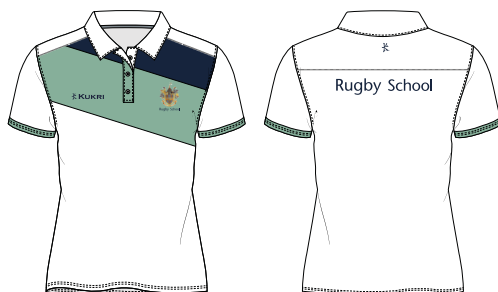


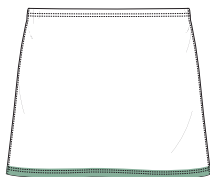
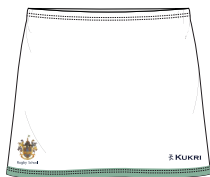
TENNIS POLO

RG00021W225

S-Spire 100% Polyester

Available in youth sizing

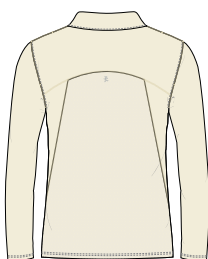




TENNIS SKORT

RG00031W223

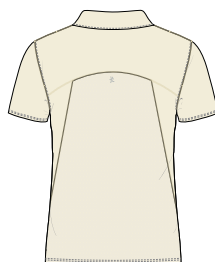
S-Spire 100% Polyester
Available in youth sizing

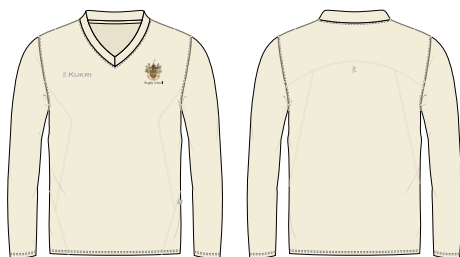


**LONG SLEEVED
CRICKET JERSEY**

KK00089M011

**SHORT SLEEVED
CRICKET JERSEY**
KK00088M011





**LONG SLEEVED
CRICKET FLEECE**
KK00091M011

SLEEVELESS CRICKET FLEECE
KK00090M011



CRICKET TROUSERS
KK00092M011



HOW TO ORDER

All Rugby School sports kit will be available to purchase on the below link.

<http://www.kukrisports.co.uk/teamshop/rugbyschoolonlineshop>

This will be a one-stop shop for parents & students to buy all of the sports kit required across the school year.

Orders placed on the online shop will be despatched within 3-5 working days; they can be delivered directly to the school boarding house or a home address.

There is also an option to customise each item with initials. This, however, extends the lead time to 15 working days. Please note that once the item is customised, we would be unable to accept a return unless the item is faulty.

Once your order has been placed, you will receive an email confirmation with the order reference, along with a target delivery date. This email also will provide a link for you to track your order. **If you do have any queries on your order, please contact us quoting your order reference.**



T: 01772 338899



E: contact@kukrisports.com

RETURNS POLICY

Our Returns policy varies depending on the type of products you have ordered. See below for more information on each type of order and their return eligibility. Your statutory rights are not affected. Please read this information carefully avoid disappointment.

BESPOKE ORDER – Goods that have been designed using our Kit designer, or have been purchased on behalf of a School/College/University or organisation, or whose kit is of a bespoke design (i.e. not available as part of our Stock range). These bespoke goods are non-returnable and cannot be refunded or exchanged.

Exception: *We will only accept returns for Bespoke orders in the event of a manufacturing fault. Where the fault is evident on delivery, for example, a name has been spelt incorrectly, this must be reported to Kukri immediately and the faulty item returned within 14 days of delivery, in their original condition, with all tags, bags and labels attached. Kukri reserve the right to reject your claim if you report or return your goods after the 14th day of delivery. For more information, please see our Terms and Conditions. For all other faults, please call our Customer Services Team.*

PERSONALISED/CUSTOMISED ORDER – Stock item(s) that you have customised, or where you have purchased customised stock on behalf of a School/College/University or organisation, who's kit include logo(s), name(s) and/or number(s). These garments are non-returnable and cannot be refunded or exchanged.

Exception: *We will only accept returns for Personalised/Customised orders in the event of a manufacturing fault. Where the fault is evident on delivery, for example, a name has been spelt incorrectly, this must be reported to Kukri immediately and the faulty item returned within 14 days of delivery, in their original condition, with all tags, bags and labels attached. Kukri reserve the right to reject your claim if you report or return your goods after the 14th day of delivery. For more information, please see our Terms and Conditions. For all other faults, please call our Customer Services Team*

PLAIN STOCK – You can return plain stock items to us within 14 days of delivery for a refund. The garments must be in their original condition, with all labels, bag, and tags intact. Any garments returned outside of this time will not be accepted. Please allow 10 working days for your return to be processed from the date we receive it, and a further 5-10 working days for any funds owed to clear into your account. This is dependent on your bank or credit card company.

SAMPLE ORDER – Where a sample order has been agreed as returnable, they should be returned to Kukri within 28 days of the despatch date. Any samples returned outside of this time will not be accepted and you will not be eligible for a refund of your deposit. The garment must be returned in their original condition with all labels, tags and bags intact, soiled samples will incur a 5 dry cleaning charge. Damaged garments will result in the deposit being retained. Bespoke and customised orders are non-returnable when purchased as a sample.

NB. Samples must be returned via your own courier arrangement or registered post. Please ensure you can track the package; in the event it is not received by Kukri as we are not responsible for returns that do not arrive.

Please take reasonable care of the goods while in your possession. We ask that all labels and tags are not removed until you are sure that you are keeping your goods, along with any original packaging, to avoid rejection of your return. This is applicable for both faulty and non-faulty items. Goods should not be soiled or damaged in any way.

Kukri are now able to offer a free returns service for all returns weighing less than 15kg. When you are issued with a return form you will also receive a link to our approved courier's website, where you will be able to arrange your return. Should you prefer or for returns over 15kg you can send via your own courier arrangement, or registered post. Please ensure you can track the package, as in the event it is not received by Kukri we are not responsible for returns that do not arrive. If you choose to use an alternative courier, please note that the return cost is payable by the customer.

Please allow 10 working days for your return to be processed from the date we receive your return, and a further 5-10 working days for any funds owed to clear into your account. This is dependent on your bank or credit card company.

Please note: Our standard product warranty for garments is 6 months from manufacture.

If you would like to discuss your order, you can email our Customer Services team at contact@kukrisports.com or you can telephone them **01772 338899** where one of the team members will be happy to help.



RETURNS FORM

We are unable to process returns without a Returns Reference number and a Returns Form. Please Contact our Customer Services team on **01772 338899** or email us at **contact@kukrisports.com** to obtain your claim reference number; without this you return may not be processed.

If you are returning a plain stock item for a refund, this should be reported and returned to us within 14 days of delivery. If you have a non-faulty garment which has been designed on our Kit designer (i.e. not available from our stock range) or you have a personalised/customised stock item, which has a logo, name and/or number, these cannot be returned except in the case of a manufacturing fault. In this case the standard terms of return apply. Please see the Returns Policy for details.

Please complete this form and enclose it with any returns.
We are unable to process returns without a valid claims reference and accompanying returns form which has all the information requested below.

Goods should be returned to:
Returns Department
Kukri Sports Ltd
171 Brierley Road
Walton Summit
Preston, PR5 8AH

Your Details

Date of Return	
Claim Reference Number	
Name	
Address	
Email Address	
Contact Telephone Number	

Is your order: (circle the correct one) *Bespoke *Personalised *Stock *Sample

What is Enclosed

Qty	Product Description	Size	Exchange Size

Reason for Return (Circle)

*Incorrect size ordered *Faulty/damaged garment *Incorrect personalisation *Wrong item received *Item no longer required
*Refund *Credit *Replacement

Space for Details (add as much information as you can to assist the processing of your return. E.g. details of fault, or damage to garment):

☐

Tick to confirm you have read the Returns Policy before returning your order.





Rugby
School

Rugby School, Rugby, Warwickshire, CV22 5EH

Telephone: 01788 556292

Email: sports@rugbyschool.net

www.rugbyschool.co.uk

#wholepersonwholepoint