



Rugby School

---

 **KUKRI**



ORANDO

LABORANDO

# INTRODUCTION

Both Rugby School and Kukri Sports strive for quality, diversity, professionalism and teamwork, and share equal passion for the game created at Rugby School in 1823 when pupil William Webb-Ellis first caught the ball and ran with it on the now world-famous Close.

Facilitating access to a multitude of sports, particularly encouraging female participation, means Rugby School is strongly aligned with our vision to inspire each individual's sporting journey. Teamwear creates a legacy of our time in sport; we now have a fantastic opportunity to showcase our shared values around continuing to develop physical activity at the School.

Our product is designed to meet the needs of young athletes, with the range as comfortable and practical off the field as it is high-performance on it. Rugby School continues to develop one of the leading sports programmes in the country.

**Boys' Core Kit** [Page 2](#)

**Boys' Summer Sports** [Page 6](#)

**Accessories** [Page 7](#)

**Girls' Core Kit** [Page 13](#)

**Girls' Summer Sports** [Page 17](#)

**How to Order** [Page 21](#)

**Returns Policy** [Page 22](#)

**Return Form** [Page 23](#)



Rugby School

 **KUKRI**

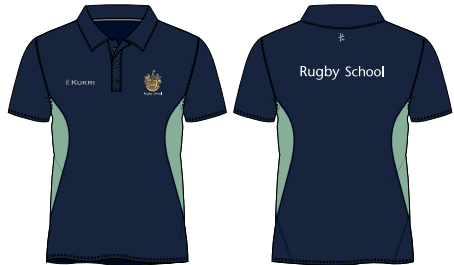


**TRAINING T-SHIRT**  
RG00073M214

S-Spire 100% Polyester  
Available in youth sizing

**TRAINING POLO**  
RG00074M214

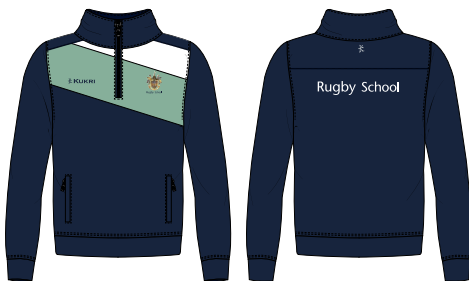
S-Spire 100% Polyester  
Available in youth sizing



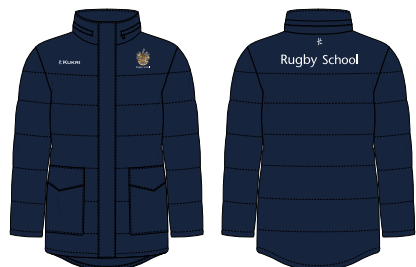
**TRAINING 1/4 ZIP TRACK TOP**  
RG00077M224

S-Spire 100% Polyester  
Available in youth sizing

*\*Replacing the full zip track top*



**UNISEX PADDED JACKET**





**HOCKEY MATCH SHIRT**  
RG00027M224

S-Spire 100% Polyester  
Available in youth sizing

**RUGBY MATCH SHIRT**  
RG00035M224

Kohilo 100% Polyester  
Available in youth sizing



**MATCH REVERSIBLE  
RUGBY SHIRT**  
RG00036M214

Duolite 100% Polyester  
Available in youth sizing



**TRAINING SHORTS**

Available in youth sizing

**CORE RUGBY SHORTS**

Available in youth sizing



**UNISEX TRACKSUIT BOTTOMS**



**UNISEX L/S BASELAYER**

Available in youth sizing

**TRAINER SOCKS (TRS)**

Nylon Mix

Available in youth sizing



**MATCH SOCKS**

RG00032U224







**ATHLETICS VEST**  
RG00016M224

S-Spire 100% Polyester  
Available in youth sizing

---

**ATHLETICS GYM SHORTS**  
RG00018M214

S-Spire 100% Polyester  
Available in youth sizing



**ATHLETICS SPLIT  
RUNNING SHORTS**  
RG000044M039

Microshell 100% Polyester

---

**ATHLETICS SPRINT SHORTS**  
RG00045M039

Draglyne 90% Polyester  
10% Elastane

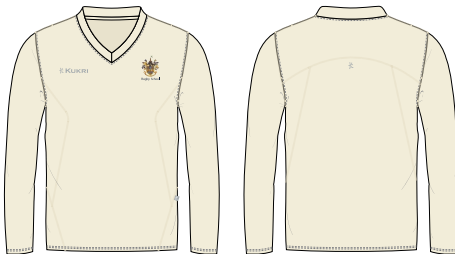




**LONG SLEEVED  
CRICKET JERSEY**  
KK00089M011

---

**SHORT SLEEVED  
CRICKET JERSEY**  
KK00088M011



**LONG SLEEVED  
CRICKET FLEECE**  
KK00091M011

---

**SLEEVELESS CRICKET FLEECE**  
KK00090M011



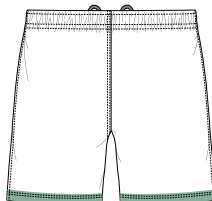
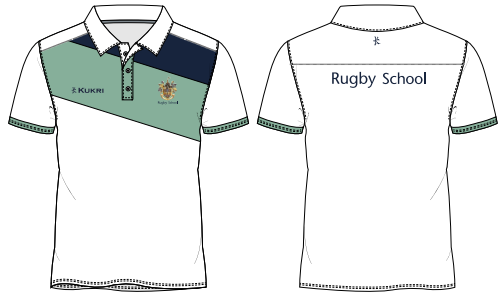


**CRICKET TROUSERS**

KK00092M011

**TENNIS POLO**  
RG00020M225

S-Spire 100% Polyester  
Available in youth sizing



**TENNIS SHORTS**

RG00018M223

S-Spire 100% Polyester  
Available in youth sizing





**SCHOOL KIT BAG (LAPTOP BAG)**  
RG00086U214



**SLIDERS  
(OPTIONAL)**



**UNISEX PADDED GILET  
(OPTIONAL)**



**SCHOOL SPORTS CAP**  
RG00103U039

220g Poly Twill 100% Polyester



**BOOTBAG**  
RG00087U214



**DUFFLE BAG (OPTIONAL)**  
RG00088U214





**TRAINING T-SHIRT**  
RG00075W214

S-Spire 100% Polyester  
Available in youth sizing

**TRAINING POLO**  
RG00076W214

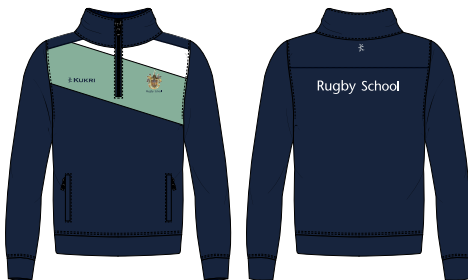
S-Spire 100% Polyester  
Available in youth sizing



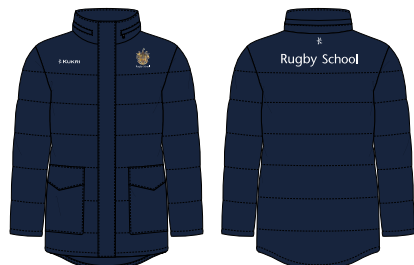
**TRAINING 1/4 ZIP TRACK TOP**  
RG00077M224

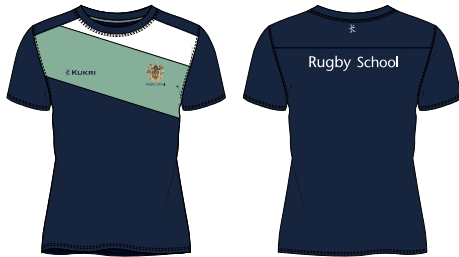
S-Spire 100% Polyester  
Available in youth sizing

*\*Replacing the full zip track top*



**UNISEX PADDED JACKET**





**HOCKEY MATCH SHIRT**  
RG00029W224

S-Spire 100% Polyester

**NETBALL DRESS**  
RG00036M214

S-Spire 100% Polyester  
Available in youth sizing



**NETBALL UNDERSHORTS**  
RG00031W214

220g 88% Polyester 12% Elastane  
Available in youth sizing



**HOCKEY MATCH SKORT**  
RG00031W214

Kohilo 100% Polyester  
Available in youth sizing







WOMEN'S TRAINING SHORTS



WOMEN'S TRAINING LEGGINGS



UNISEX TRACKSUIT BOTTOMS



MATCH SOCKS  
RG00032U224



TRAINER SOCKS (TRS)

Nylon Mix  
Available in youth sizing



**Proathletics**



**ATHLETICS VEST**  
RG00017W224

S-Spire 100% Polyester  
Available in youth sizing

---

**ATHLETICS GYM SHORTS**  
RG00019W214

S-Spire 100% Polyester  
Available in youth sizing



**ATHLETICS SPLIT  
RUNNING SHORTS**  
RG00047W039

Microshell 100% Polyester

---

**ATHLETICS SPRINT SHORTS**  
RG00048W039

Draglyne 90% Polyester  
10% Elastane

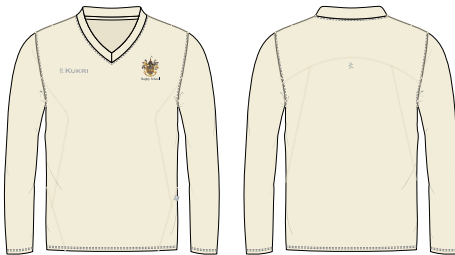




**LONG SLEEVED  
CRICKET JERSEY**  
KK00089M011

---

**SHORT SLEEVED  
CRICKET JERSEY**  
KK00088M011



**LONG SLEEVED  
CRICKET FLEECE**  
KK00091M011

---

**SLEEVELESS CRICKET FLEECE**  
KK00090M011

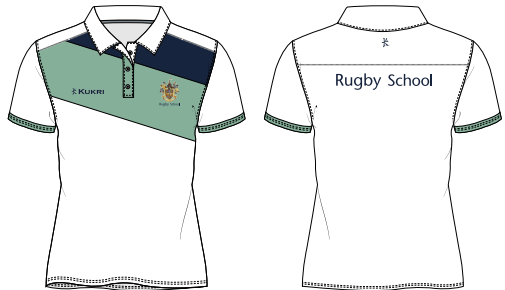




**CRICKET TROUSERS**  
KK00092M011

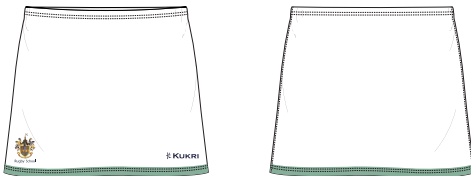
**TENNIS POLO**  
RG00021W225

S-Spire 100% Polyester  
Available in youth sizing



**TENNIS SKORT**  
RG00031W223

S-Spire 100% Polyester  
Available in youth sizing





# HOW TO ORDER

All Rugby School sports kit will be available to purchase on the below link.

<http://www.kukrisports.co.uk/teamshop/rugbyschoolonlineshop>

This will be a one-stop shop for parents & students to buy all of the sports kit required across the school year.

Orders placed on the online shop will be despatched within 3-5 working days; they can be delivered directly to the school boarding house or a home address.

There is also an option to customise each item with initials. This, however, extends the lead time to 15 working days. Please note that once the item is customised, we would be unable to accept a return unless the item is faulty.

Once your order has been placed, you will receive an email confirmation with the order reference, along with a target delivery date. This email also will provide a link for you to track your order. **If you do have any queries on your order, please contact us quoting your order reference.**



T: 01772 338899

| E: [contact@kukrisports.com](mailto:contact@kukrisports.com)

# RETURNS POLICY

Our returns policy varies depending on the type of products you have ordered. See below for more information on each type of order and their return eligibility. Your statutory rights are not affected. Please read this information carefully to avoid disappointment.

**PERSONALISED/CUSTOMISED ORDER** – *Plain stock items which have been personalised with a logo, name and/or number.*

Stock item(s) that you have customised, or where you have purchased customised stock on behalf of a school/college/university or organisation, whose kit include logo(s), name(s) and/or number(s). These garments are non-returnable and cannot be refunded or exchanged.

*Exception: We will only accept returns for Bespoke and Personalised/Customised orders in the event of a manufacturing fault. Where the fault is evident on delivery, for example, a name has been spelt incorrectly, this must be reported to Kukri immediately and the faulty item returned within 28 days of delivery, in their original condition, with all tags, bags and labels attached. Kukri reserve the right to reject your claim if you report or return your goods more than 28 days after delivery. For more information, please see our Terms and Conditions. For all other faults, please call our Customer Services Team.*

**PLAIN STOCK** – *Plain stock items which are free from any additional customisation*

You can return plain stock items to us within 14 days of delivery for a refund or exchange. The garments must be in their original condition, with all labels, bag and tags intact. Any garments returned outside of this time will not be accepted. We will process accepted returns for a refund or exchange within 14 days of receiving your return.

Please take reasonable care of the goods while in your possession. We ask that all labels and tags are not removed until you are sure that you are keeping your goods, along with any original packaging, to avoid rejection of your return. This is applicable for both faulty and non-faulty items. Goods should not be soiled or damaged in any way.

*Returned orders should be sent via courier or registered post to ensure it can be tracked in the event the courier fails to deliver your parcel to Kukri. Kukri are not responsible for returns that do not arrive. All return costs are payable by the customer, except where a manufacturing fault has been confirmed by Kukri. We will then refund the return postage costs up to £8 inc VAT for UK returns and £25 inc VAT for international returns. Proof of postage will be required before any credit or refund is processed.*

Please allow 10 working days for your return or exchange to be processed from the date we receive your return, and a further 5-10 working days for any funds owed to clear into your account. This is dependent on your bank or credit card company.

Please note: Our standard product warranty for garments is 6 months from manufacture. If you would like to discuss your order, you can email our Customer Services team at [contact@kukrisports.com](mailto:contact@kukrisports.com) or you can telephone them on 01772 338899 where one of the team members will be happy to help.





# RETURNS FORM

We are unable to process returns without a Returns Reference number and a Returns Form. Please contact our Customer Services team on 01772 338899 or email us at [contact@kukrisports.com](mailto:contact@kukrisports.com) to obtain your claim reference number; without this your return may not be processed.

If you are returning a plain stock item for a refund or exchange, this should be reported and returned to us within 14 days of delivery. If you have a non-faulty garment which has been designed on our Kit designer (i.e. not available from our stock range) or you have a personalised/customised stock item, which has a logo, name and/or number, these cannot be returned except in the case of a manufacturing fault. In this case the standard terms of return apply. Please see the Returns Policy for details.

Please complete this form and enclose it with any returns. We are unable to process returns without a valid claims reference and accompanying returns form which has all the information requested below.

Goods should be returned to:  
**Returns Department**  
**Kukri Sports Ltd**  
**171 Brierley Road**  
**Walton Summit**  
**Preston, PR5 8AH**

## Your details

Date of Return	
Claims Reference number	
Name	
Address	
Email address	
Contact Telephone number	

Is your order: (circle the correct one) \*Bespoke \*Personalised \*Stock \*Sample

## What is enclosed

Qty	Product Description	Size	Exchange size

## Reason for Return (circle)

\*Exchange (add details below) \*Faulty/damaged garment \*Incorrect personalisation \*Wrong item received \*Item no longer required \*Refund \*Credit \*Replacement

*Space for details (add as much information as you can to assist the processing of your return. E.g. sizes for exchange, details of fault or damage to garment):*

Tick to confirm you have read the Returns Policy before returning your order.



Rugby  
School

Rugby School, Rugby, Warwickshire, CV22 5EH

Telephone: 01788 556292

Email: [sports@rugbyschool.net](mailto:sports@rugbyschool.net)

[www.rugbyschool.co.uk](http://www.rugbyschool.co.uk)

[#wholepersonwholepoint](https://twitter.com/wholepersonwholepoint)